

Sistema GSL

› PROCESSO PRODUTTIVO

Schiumatura sotto pressa a piani riscaldati in discontinuo

› ISOLAMENTO

Poliuretano espanso rigido, esente da CFC, autoestinguenza ISO 3582

› RIVESTIMENTI ESTERNI

Lamiera d'acciaio zincopreverniciato (PV), liscia o grecata
Lamiera d'acciaio inox (IX) AISI 304

› GIUNTI

Ad incastro maschio-femmina con gancio ad eccentrico

› APPLICAZIONE

Celle e magazzini frigoriferi ad alta, media e bassa temperatura per depositi gelati e surgelati, magazzini ortofrutticoli e florovivaistici, stoccaggio e conservazione materie prime.

› SPESSORI DISPONIBILI

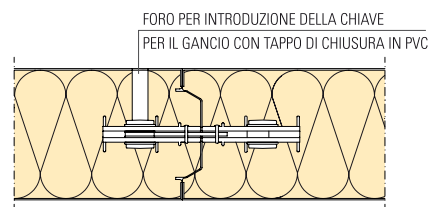
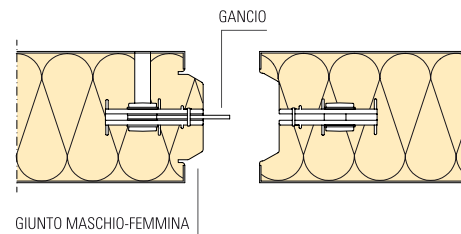
60 / 80 / 100 / 120 / 160 / 200 mm

› ALTEZZA PANNELLI

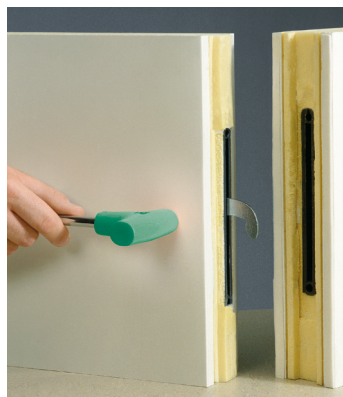
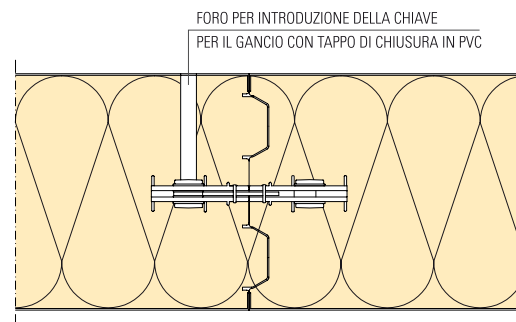
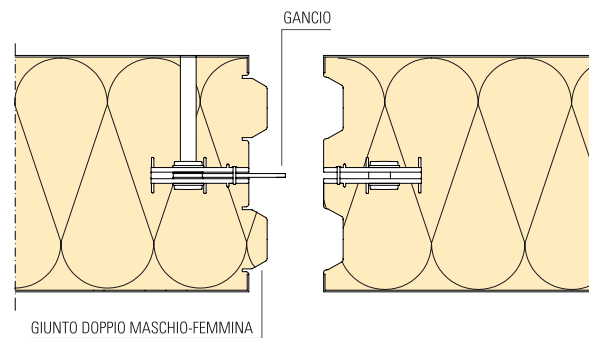
Secondo esigenze

La giunzione con incastro maschio-femmina di poliuretano a vista assicura continuità d'isolamento e perfetta tenuta termica. Il preciso accostamento dei pannelli avviene mediante trazione di ganci in materiale sintetico ed acciaio del tipo ad eccentrico, alloggiati nelle apposite sedi prima della fase d'espansione del poliuretano. Sui bordi longitudinali del rivestimento, in funzione della tipologia d'applicazione, può essere posata una guarnizione a cellule chiuse, compressa durante il serraggio del gancio, ovvero sigillante di tipo alimentare. Grazie alla speciale progettazione dei giunti i pannelli GSL, oltre ad assicurare l'eliminazione di qualsiasi possibile ponte termico, possono essere agevolmente riutilizzati in caso di future estensioni o modifiche.

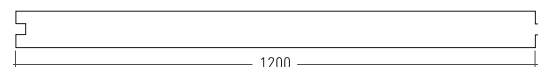
SPESSORI: 60 / 80 / 100 / 120 mm



SPESSORI: 160 / 200 mm



› MODULARITÀ



GSL System

› MANUFACTURING PROCESS

High pressure polyurethane foam injection under hot multiplate stamping press - batch process

› INSULATION

ISO 3582 self extinguishing rigid polyurethane foam, CFC free

› EXTERNAL FACING

Pre-painted steel sheet

AISI 304 stainless-steel sheet

› JOINTS

Dry tongue-and-groove joints with eccentric coupling hooks

› APPLICATIONS

Refrigeration rooms and warehouses at positive or low temperatures for storing and preserving food, fruit and vegetables, plants and flowers, medicines, frozen and deep-frozen foods and various other products.

› AVAILABLE THICKNESSES

60 / 80 / 100 / 120 / 160 / 200 mm

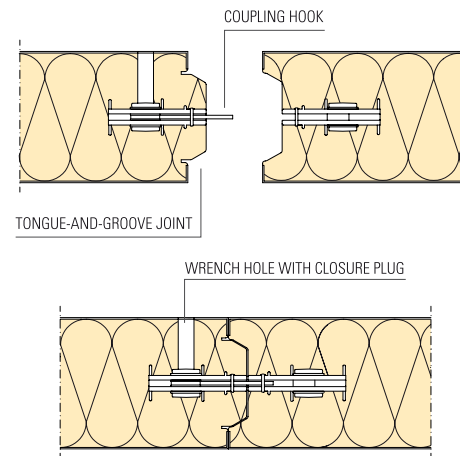
› PANEL HEIGHT

According to client requirements

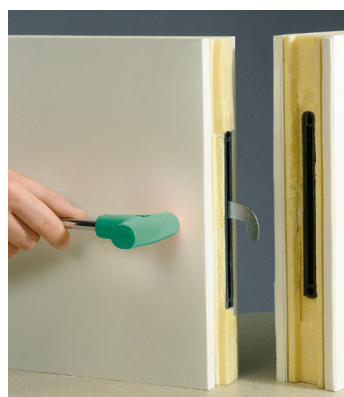
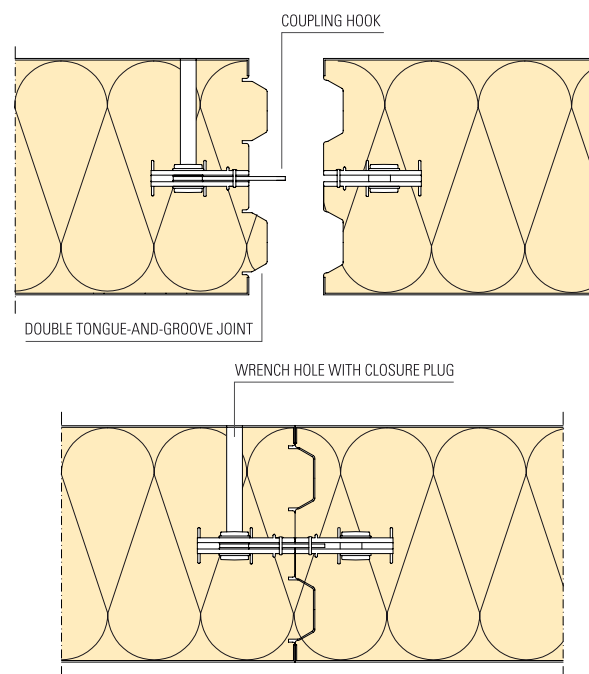
The polyurethane tongue-and-groove joint ensures both insulation continuity and perfect thermal stability.

The perfect alignment of the panels is due to the tightening of the coupling hooks, which are positioned in their slots before the expansion step. These hooks are made of steel and synthetic material. Depending on what use the panels are to be put to, a closed cell seal can be installed along the side edges of the panels, this will be compressed when the coupling hooks are tightened. Otherwise, food-grade sealing can be applied. Due to the special design of the joints, GSL system panels are easy to reuse if unforeseen extensions or modifications are necessary in the future.

THICKNESSES: 60 / 80 / 100 / 120 mm



THICKNESSES: 160 / 200 mm



› MODULARITY

