

Sistema GSC

› PROCESSO PRODUTTIVO

Schiumatura in continuo

› ISOLAMENTO

Poliuretano espanso rigido, esente da CFC, autoestinguenza ISO 3582

› RIVESTIMENTI ESTERNI

Lamiera d'acciaio zincopreverniciato (PV), liscia o grecata

Lamiera d'acciaio inox (IX) AISI 304

› GIUNTI

Ad incastro maschio-femmina con interposta guarnizione di tenuta

› APPLICAZIONE

Controsoffitture, pareti di tamponamento, magazzini di stoccaggio a temperatura controllata

› SPESSORI DISPONIBILI

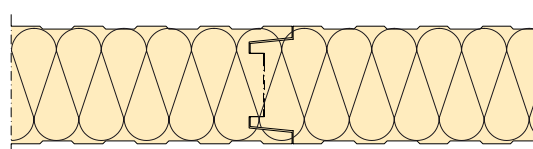
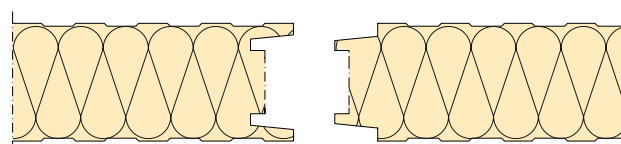
40 / 50 / 60 / 80 / 100 / 120 mm

› ALTEZZA PANNELLI

Fino alla massima misura trasportabile

SPESSORI: 40 / 50 / 60 / 80 / 100 / 120 / 150 / 200 mm

GIUNTO AD INCASTRO



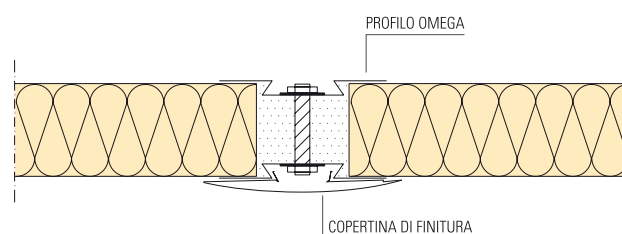
Il sistema GSC si presta alla realizzazione di grandi controsoffitture, pareti di tamponamento e magazzini di stoccaggio a temperatura controllata. Grazie al giunto ad incastro semplice maschio-femmina senza l'ausilio di ganci, consente di ottimizzare i costi d'installazione permettendo rapidità d'esecuzione.

Per applicazione in bassa temperatura o per realizzazione di pareti esterne di notevole altezza, lo stesso tipo di pannello è disponibile con giunzione da schiumare in opera.

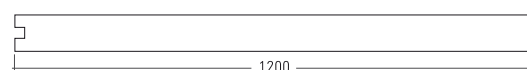
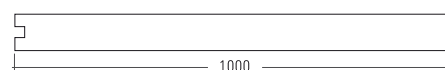
Spessori disponibili: 120 / 150 / 180 / 200 mm

SPESSORI: 120 / 150 / 180 / 200 mm

GIUNTO SCHIUMATO



› MODULARITÀ



GSC System

› MANUFACTURING PROCESS

Continuous cycle system

› INSULATION

ISO 3582 self extinguishing rigid polyurethane foam, CFC free

› EXTERNAL FACING

Pre-painted steel sheet

AISI 304 stainless-steel sheet

› JOINTS

Tongue-and-groove joint with sealing gasket

› APPLICATIONS

False ceilings, partitions, cold storage warehouses and rooms

› AVAILABLE THICKNESSES

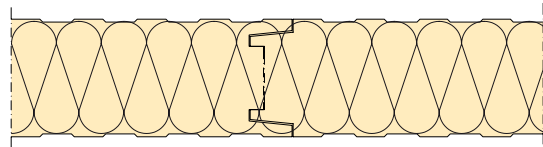
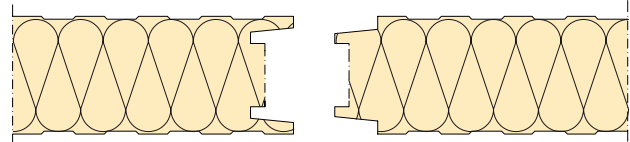
40 / 50 / 60 / 80 / 100 / 120 mm

› PANEL HEIGHT

Maximum size is limited only by the logistics of transportation

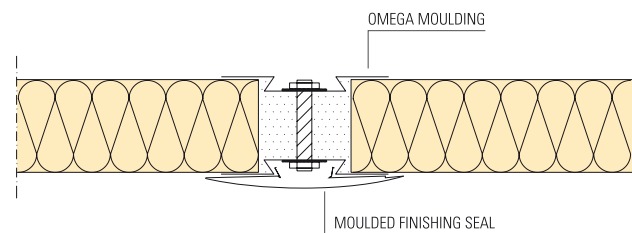
THICKNESSES: 40 / 50 / 60 / 80 / 100 / 120 / 150 / 200 mm

TONGUE-AND-GROOVE JOINT



THICKNESSES: 120 / 150 / 180 / 200 mm

FOAMED FILLED JOINT



The GSC system is particularly suitable for constructing large-scale false ceilings, partitions and cold storage warehouses and rooms at controlled temperatures. The tongue-and-groove joint system, which does not require coupling hooks, means that the GSC panels are quick and easy to assemble and can be produced at a contained cost.

These panels are also available for low temperature rooms or for erecting external walls of considerable height. Panels produced for these applications have moulded metal joints that are sealed during installation by injecting polyurethane foam. Available thicknesses: 120 / 150 / 180 / 200 mm.



› MODULARITY

